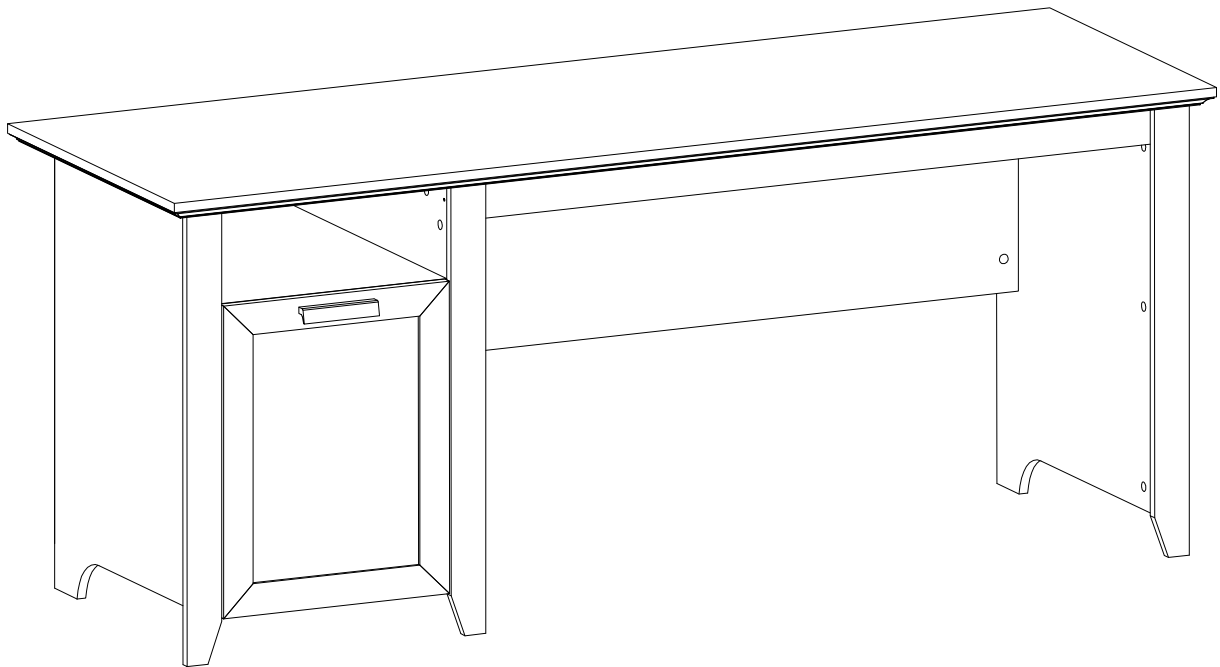


ASSEMBLY INSTRUCTIONS

Important Safety Instructions:

- Please read all instructions before beginning assembly
- Please make sure receive all the parcels to start the assembly
- For your safety and convenience, assembly by two people is recommended
- Use the parts and hardware lists to identify and separate each of the components included
- Save all packing materials until assembly is completed to avoid the accidental discarding of smaller parts or hardware



THANK YOU FOR PURCHASING

PARTS LIST

1 X1

2 X1

3 X1

4 X1

5 X1

6 X2

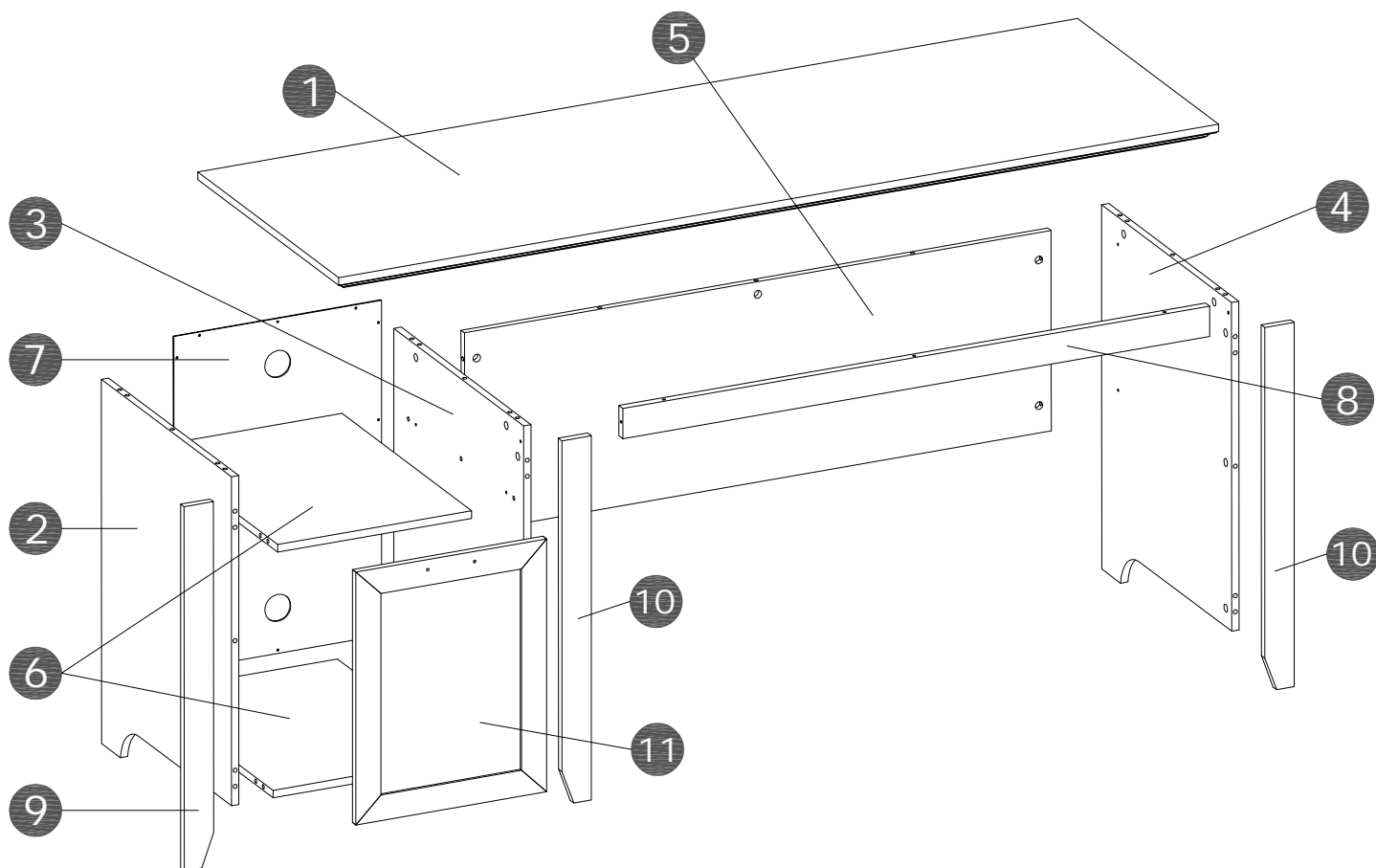
7 X1

8 X1

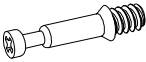



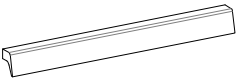
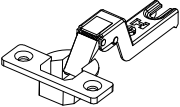
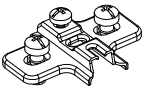
9 X1

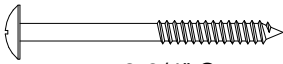
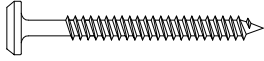
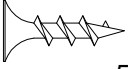
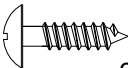
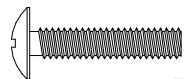
10 X2

11 X1



HARDWARE LIST

Name	Part	Qty.	Spare
A		28	1
B		28	1
C		16	
D		29	1
F		1	
G		2	
H		2	

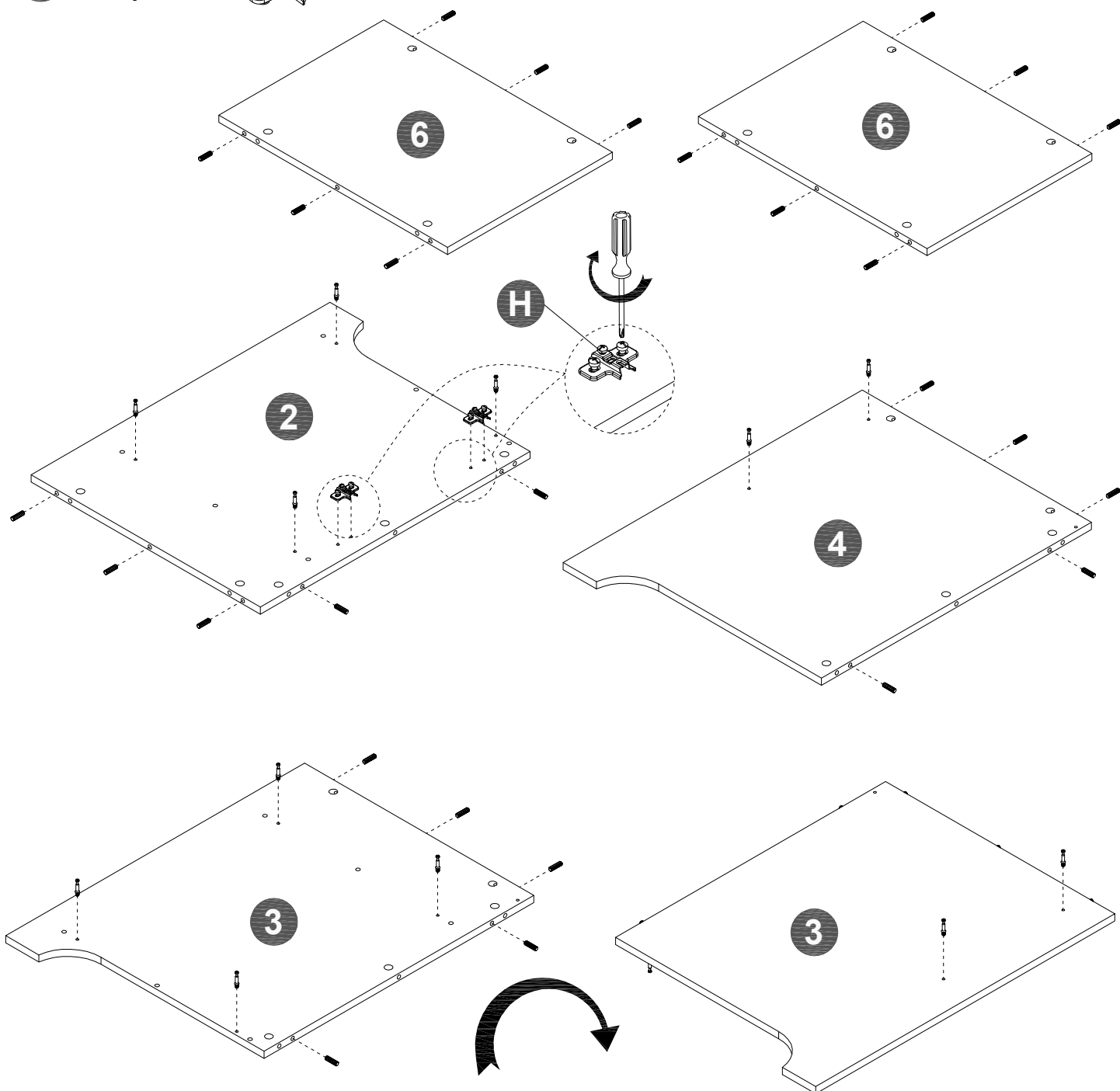
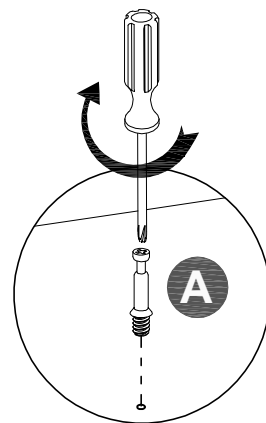
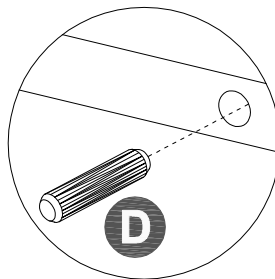
Name	Part	Qty.	Spare
I	 2-3/4" Screw	3	
J	 2" Screw	2	
K	 5/8" Screw	4	1
L	 9/16" Screw	14	1
M	 7/8" Bolt	2	1

STEP 1

A x 12pcs 

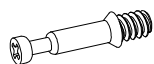
D x 27pcs 

H x 2pcs 

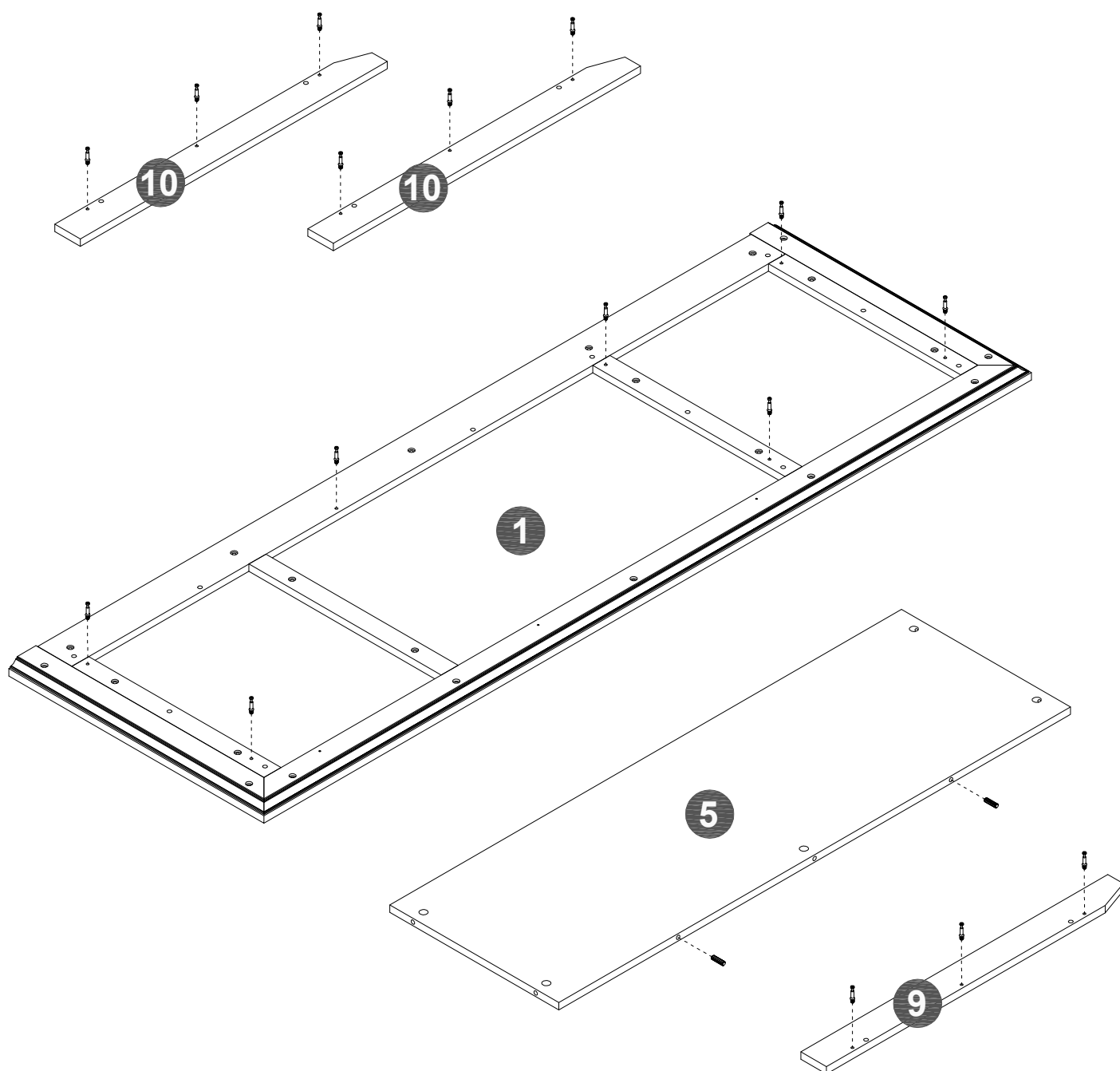
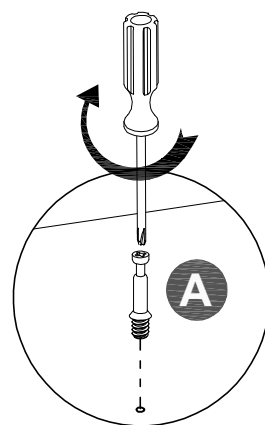
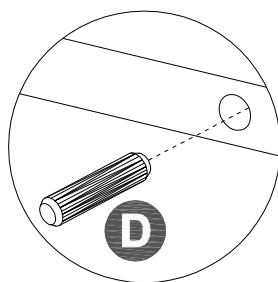


STEP 2

A x 16cs



D x 2pcs

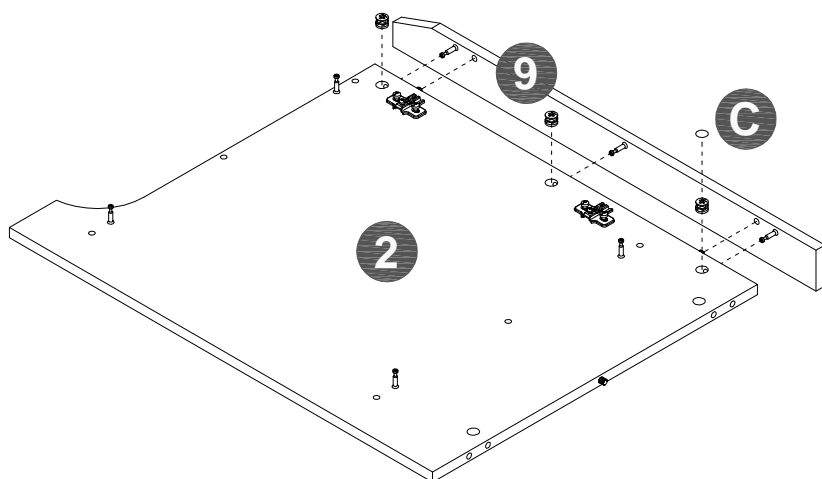
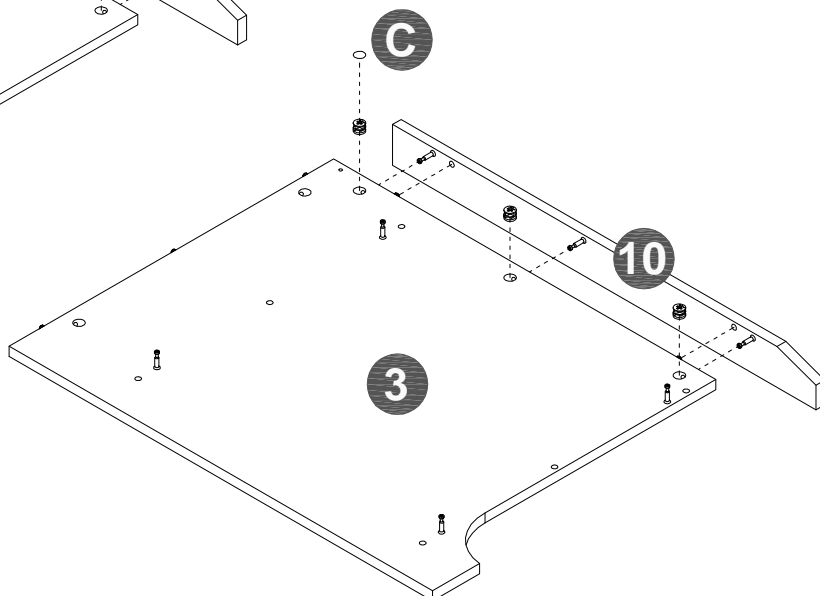
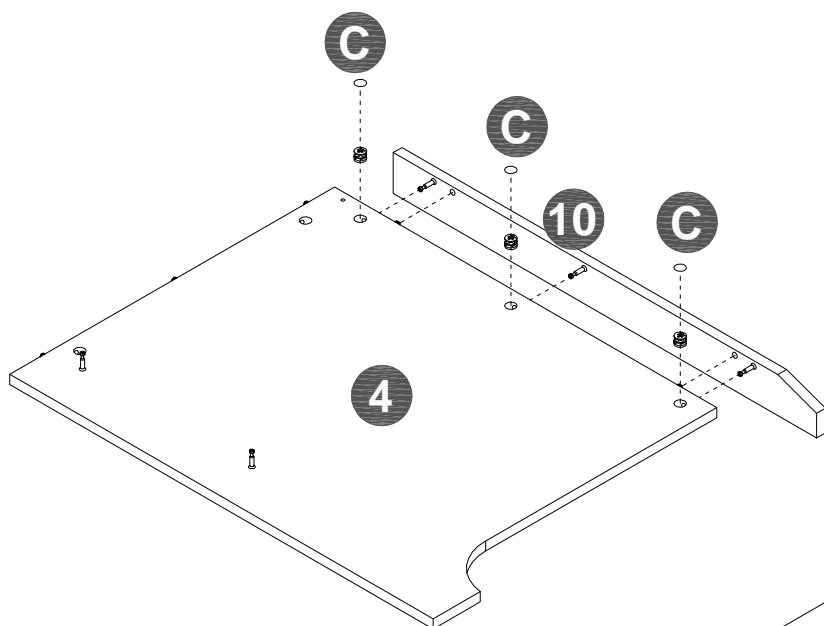
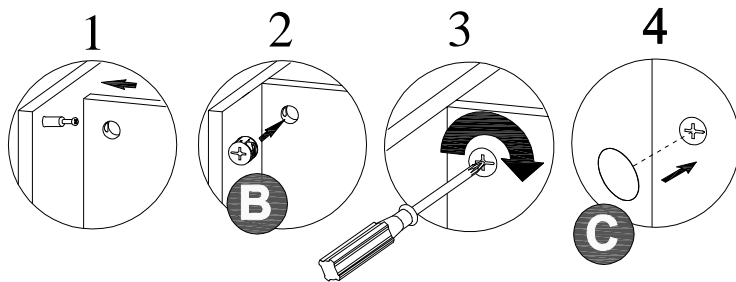


STEP 3

B x 9pcs

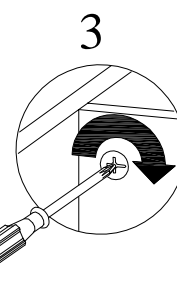
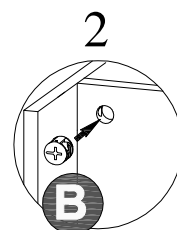
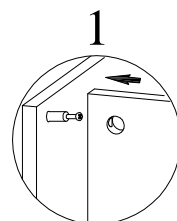
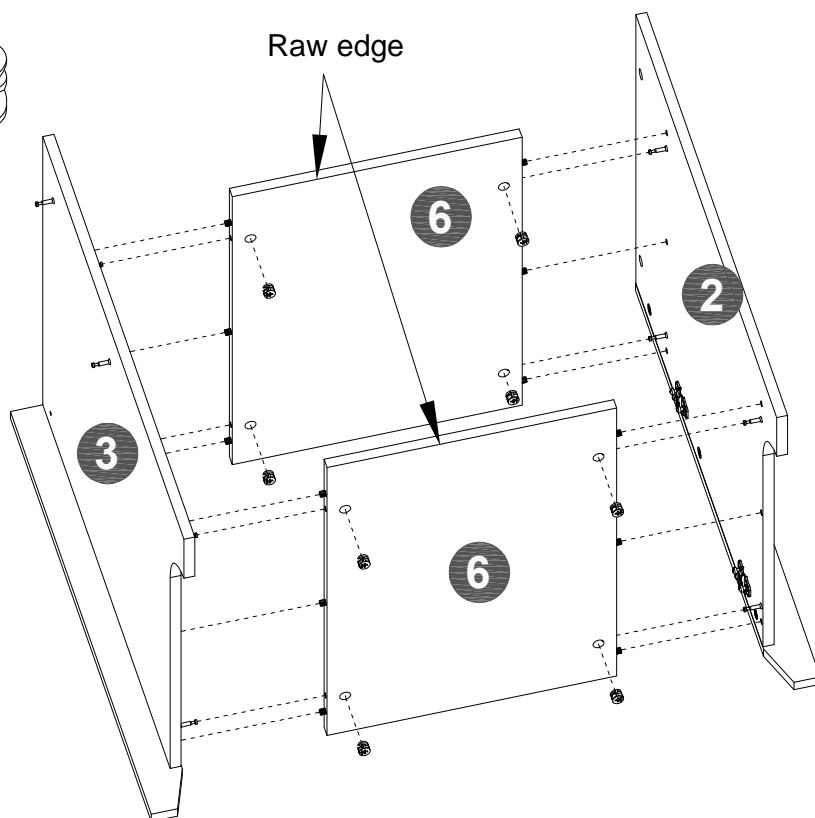


C x 5pcs



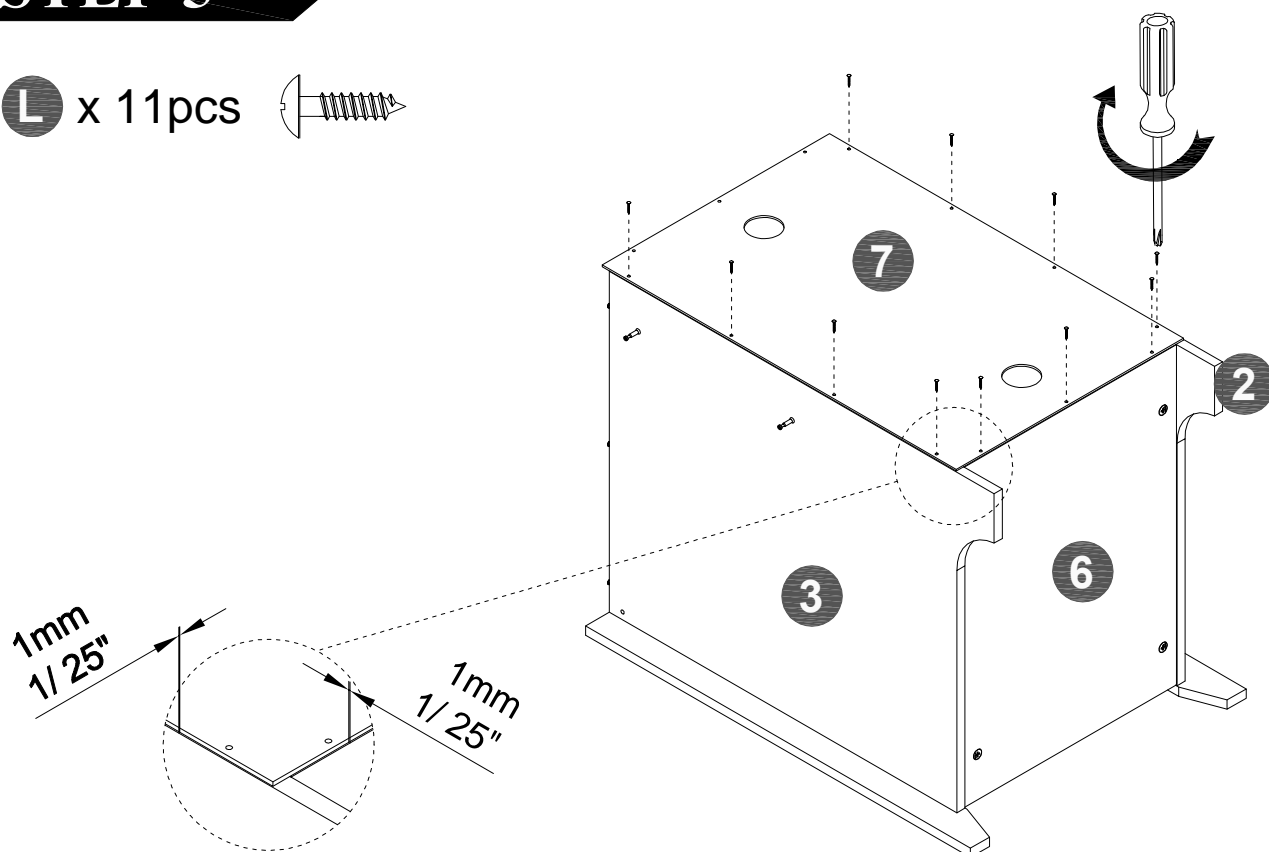
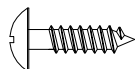
STEP 4

B x 8pcs



STEP 5

L x 11pcs

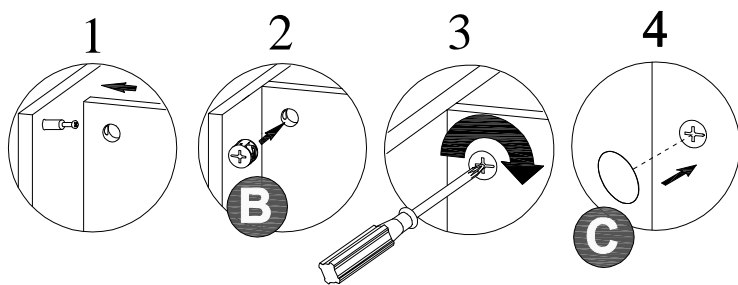


STEP 6

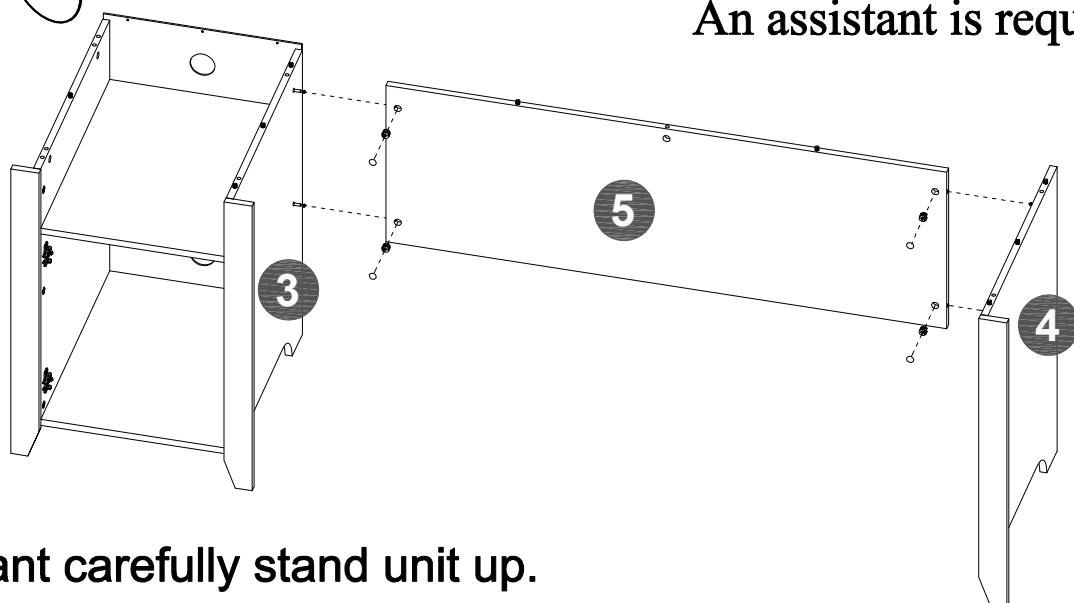
B x 4pcs



C x 4pcs



An assistant is required.

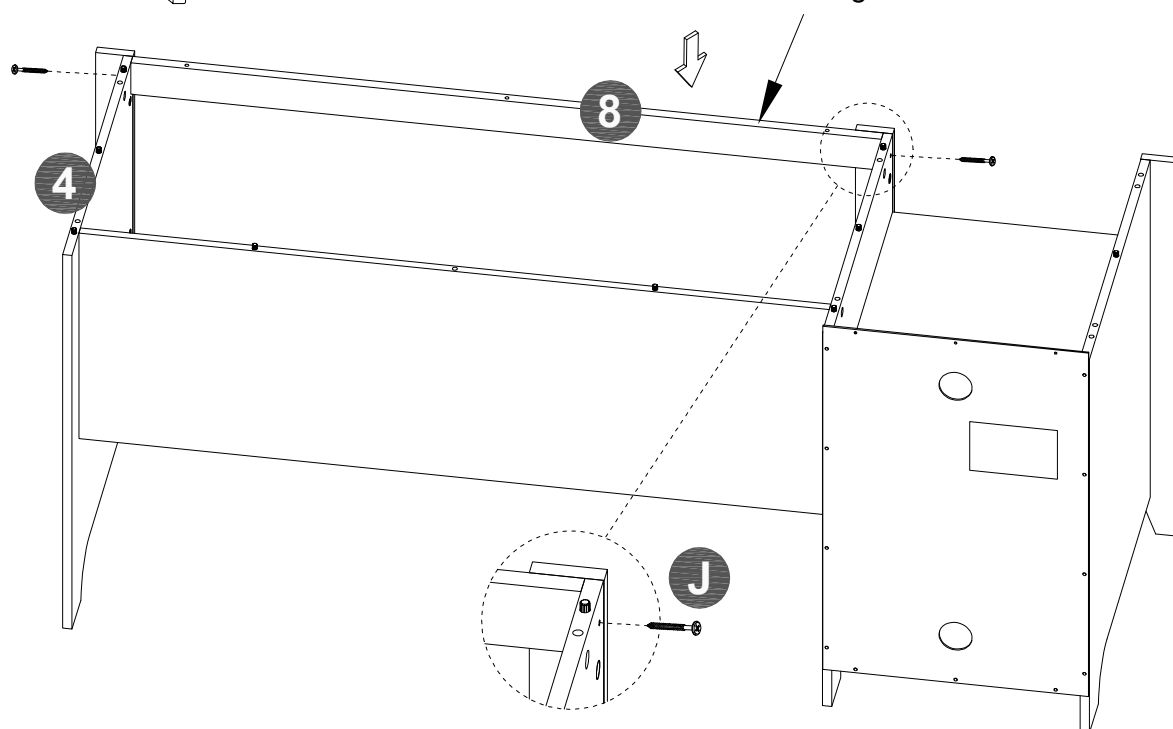
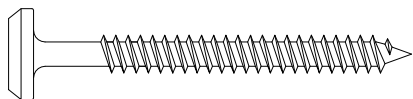


With assistant carefully stand unit up.


STEP 7

An assistant is required.


J x 2pcs

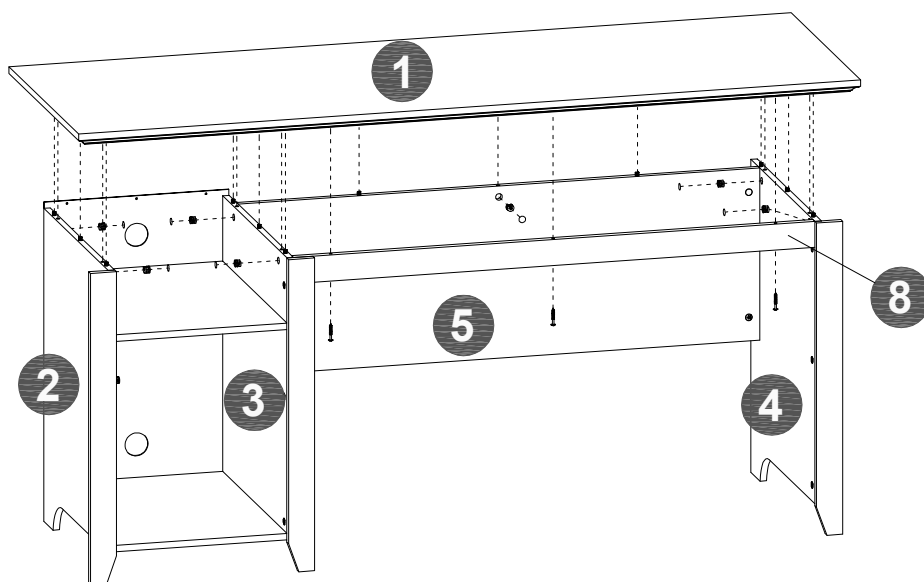
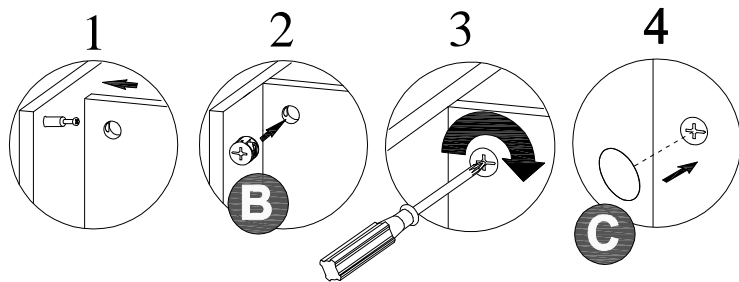


STEP 8

I x 3pcs 

B x 7pcs 

C x 7pcs 



An assistant is required.

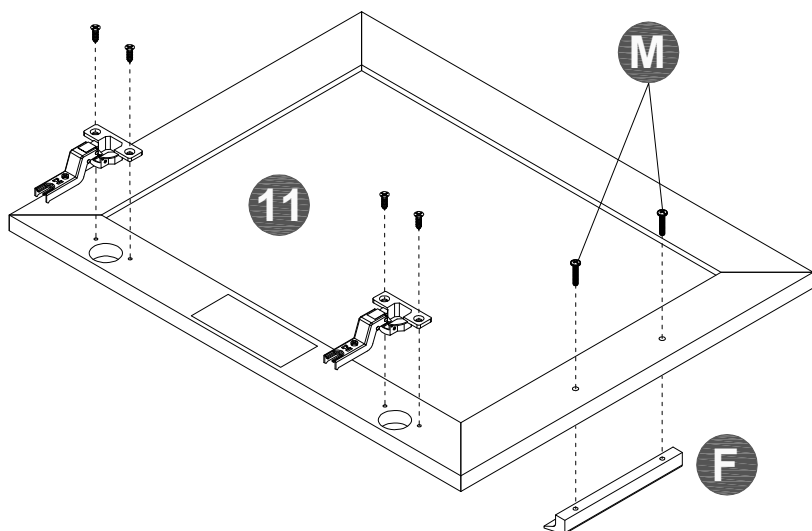
STEP 9

K x 4pcs 

G x 2pcs 

M x 2pcs 

F x 1pc 



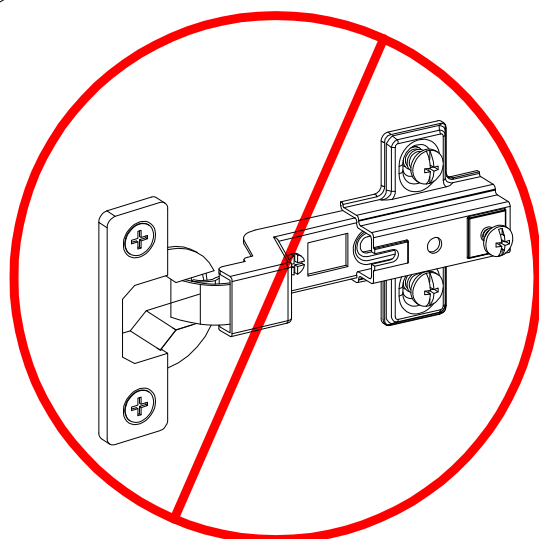
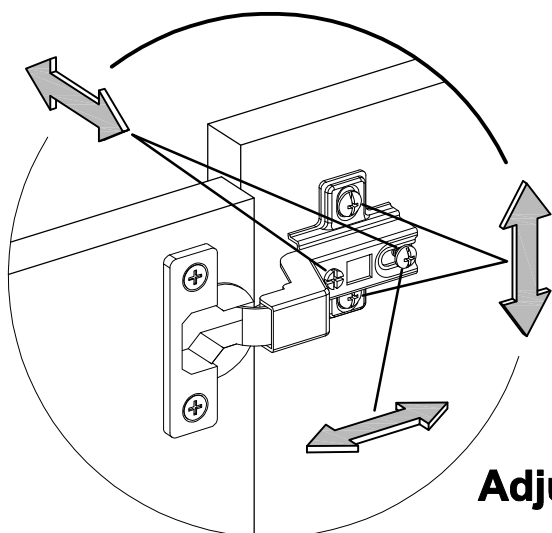
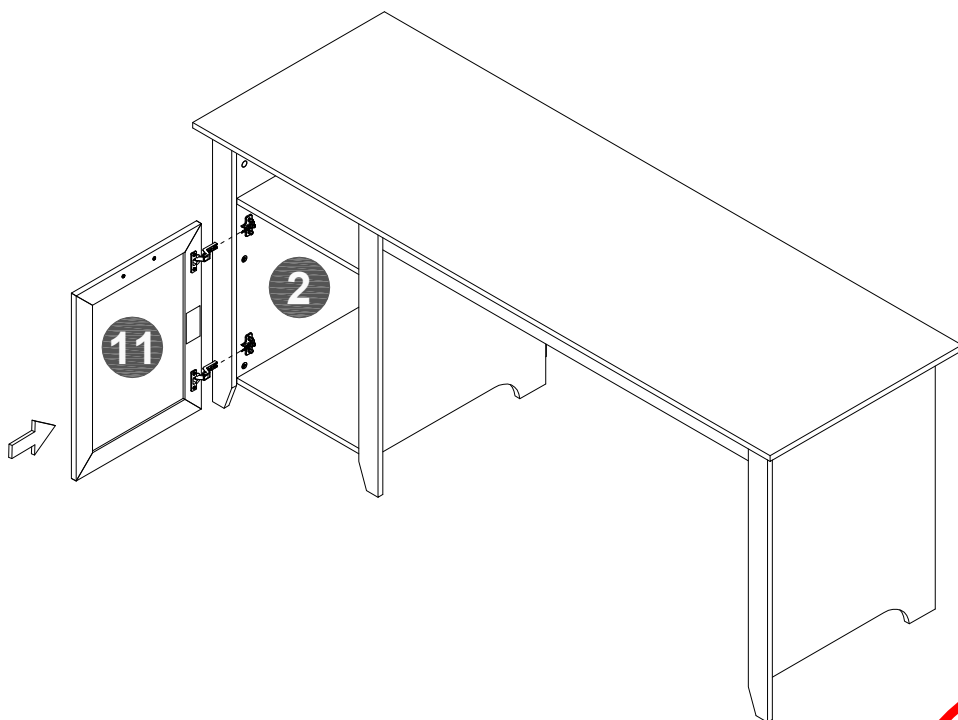
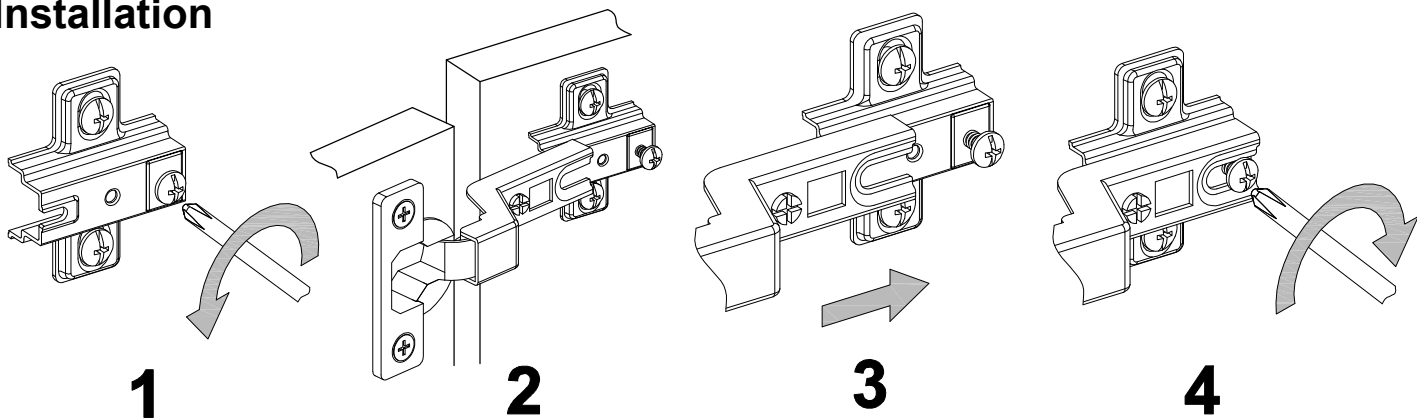
WARNING

Caution, restricting airflow may result in equipment overheating.

Slots and openings in the back and bottom of the cabinet are provided for ventilation. To ensure reliable operation of the electronic equipment and to protect it from overheating, be sure these openings are not blocked or covered.

STEP 10

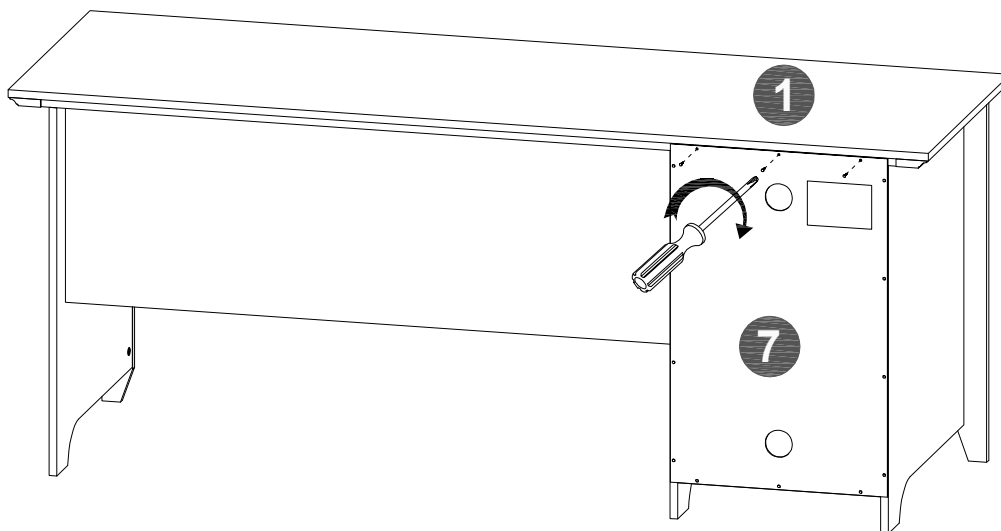
Installation



**DO NOT Insert
Hinge beneath mount**

STEP 11

L x 3pcs 



Maximum weight capacities

