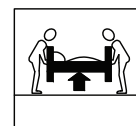
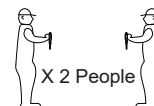


# ASSEMBLY INSTRUCTIONS

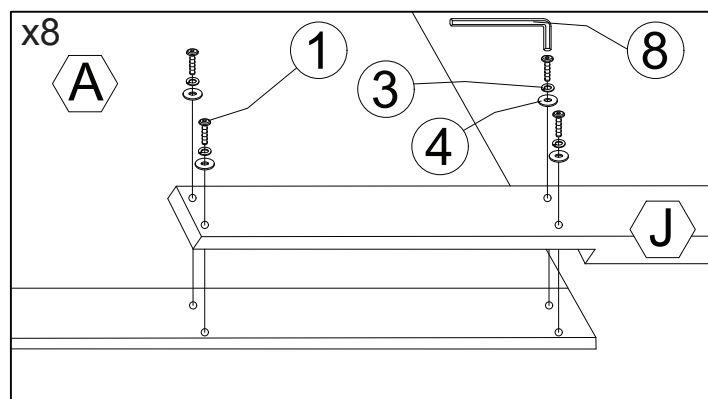
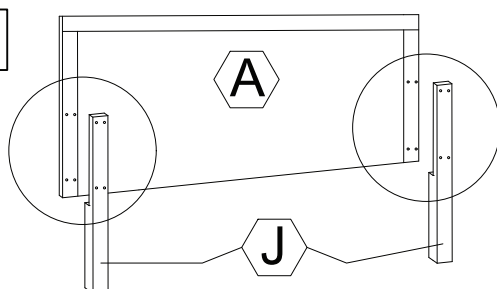
Important note : - Place all wooden part on a clean and smooth surface such as rug or carpet to avoid the part from being scratch.  
 - Please follow the assembly instruction step by step.  
 - Do not tighten all screw until the bed is fully set up.

NO	PART LIST	QTY
A	HEADBOARD	1PC
B	FOOTBOARD	1PC
C	SIDE PANEL	2PCS
D	BED SLAT	12PCS
E	BED CENTER RAIL	2PCS
F	BED CENTER RAIL SUPPORT(LONG)	6 PCS
G	BED CENTER RAIL SUPPORT(SHORT)	2PCS
H	DRAWER SUPPORT	1PC
I	DRAWER	2PCS
J	HEADBOARD LEG	2PCS
K1	RIGHT SIDE PANEL (DRAWER)	2PCS
K2	LEFT SIDE PANEL (DRAWER)	2PCS
L1	DRAWER	1PC
L2	DRAWER	1PC

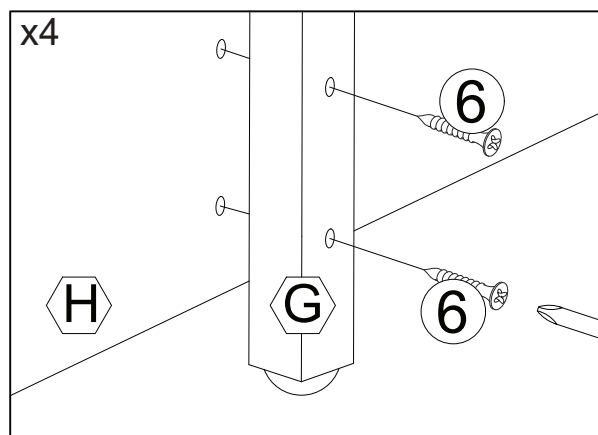
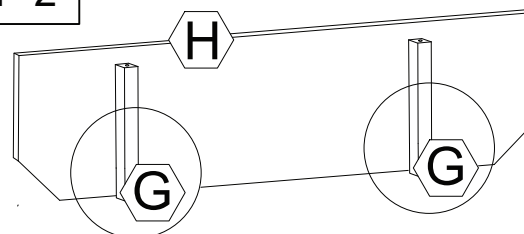
NO	HARDWARE LIST	QTY
1	JCBC M6 X 35MM	12PCS
2	JCBB M8 X 20MM	16PCS
3	SPRING WASHER	8PCS
4	FLAT WASHER	8PCS
5	MINIFIX 2 IN 1	20SETS
6	CSK M4 X 30MM	52PCS
7	CSK M3.5 X 16MM	8PCS
8	ALLEN KEY M4	1PC
9	ALLEN KEY M5	1PC
10	RUNNER	4PCS
11	LED	1PC



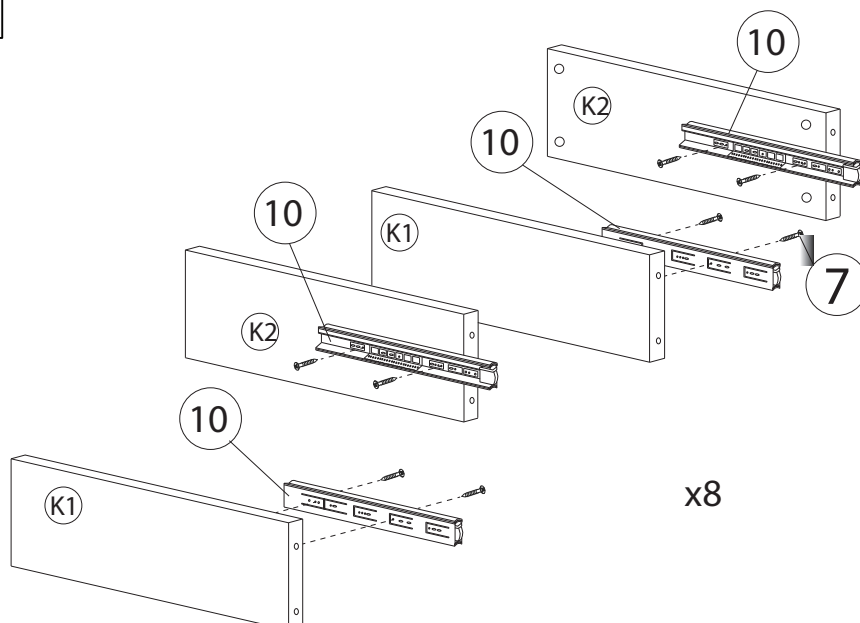
## STEP 1



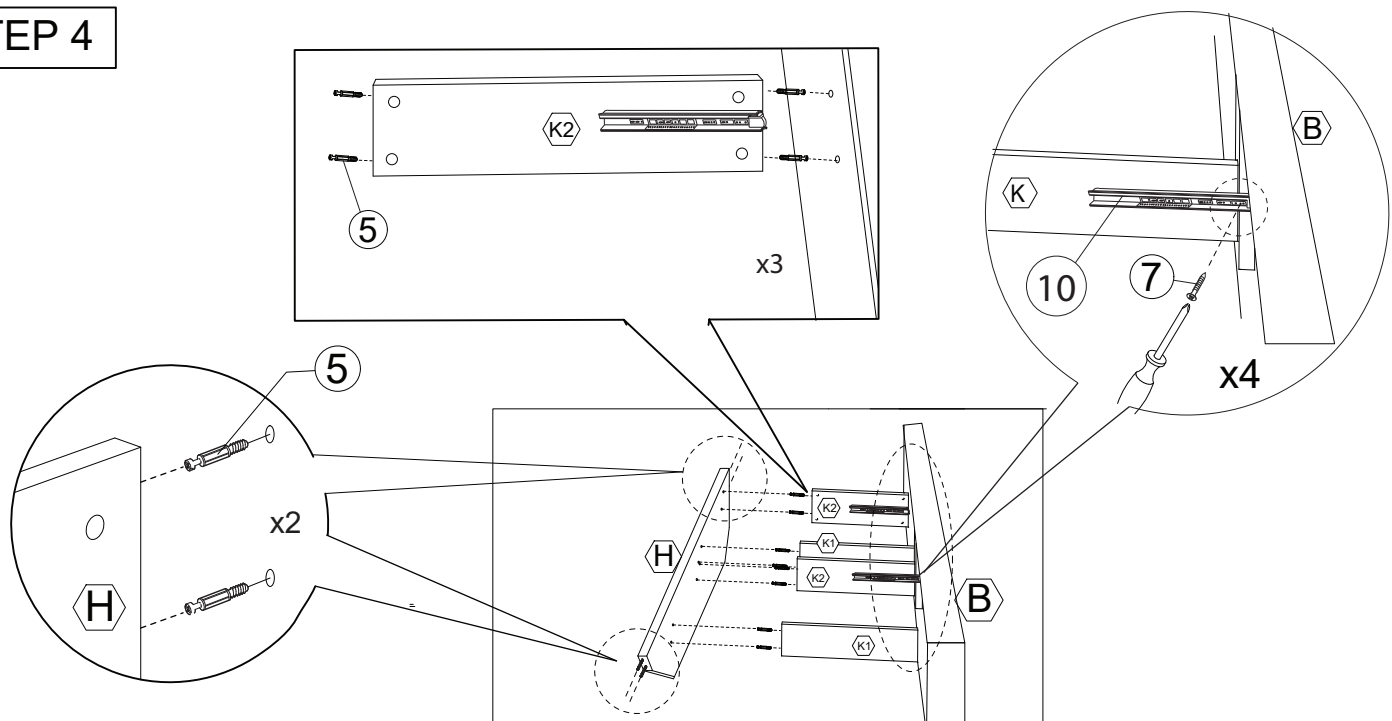
## STEP 2



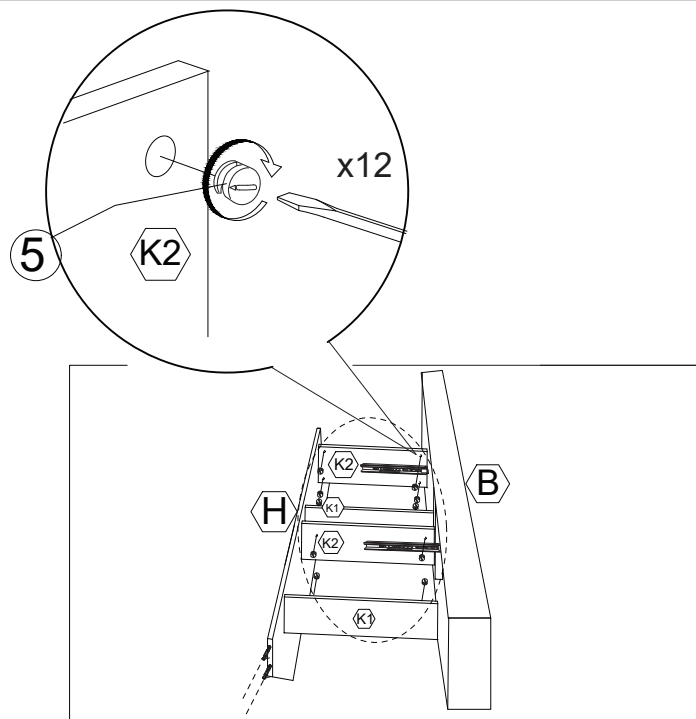
## STEP 3



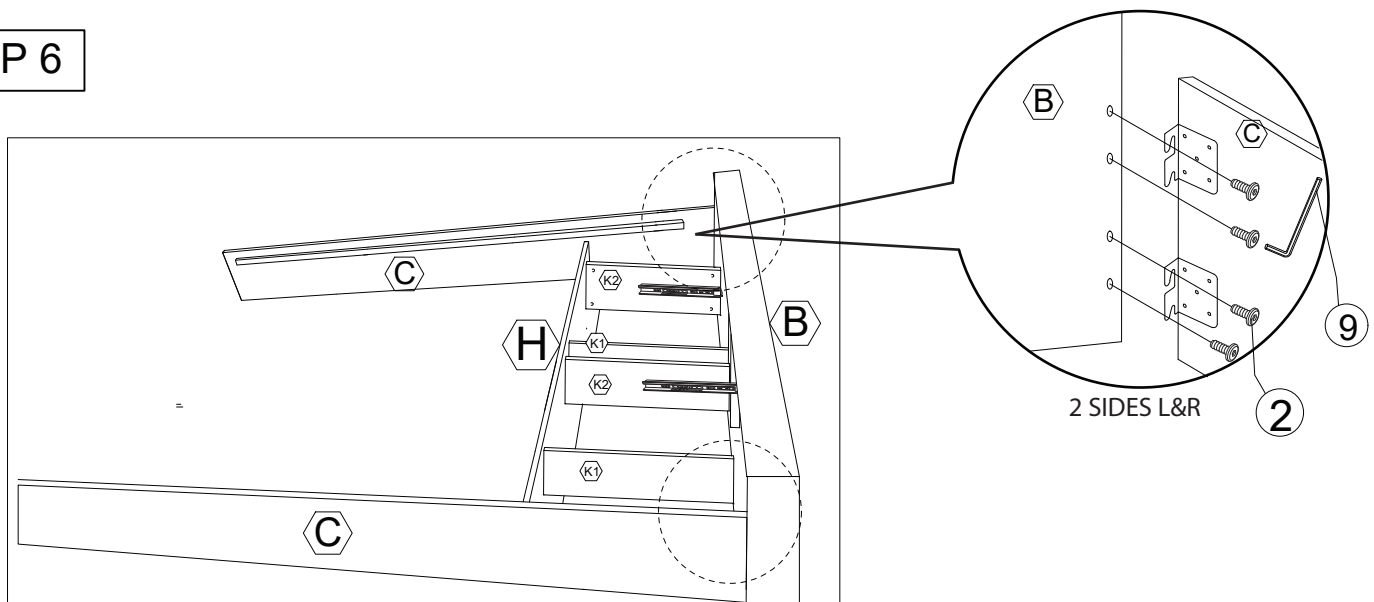
## STEP 4



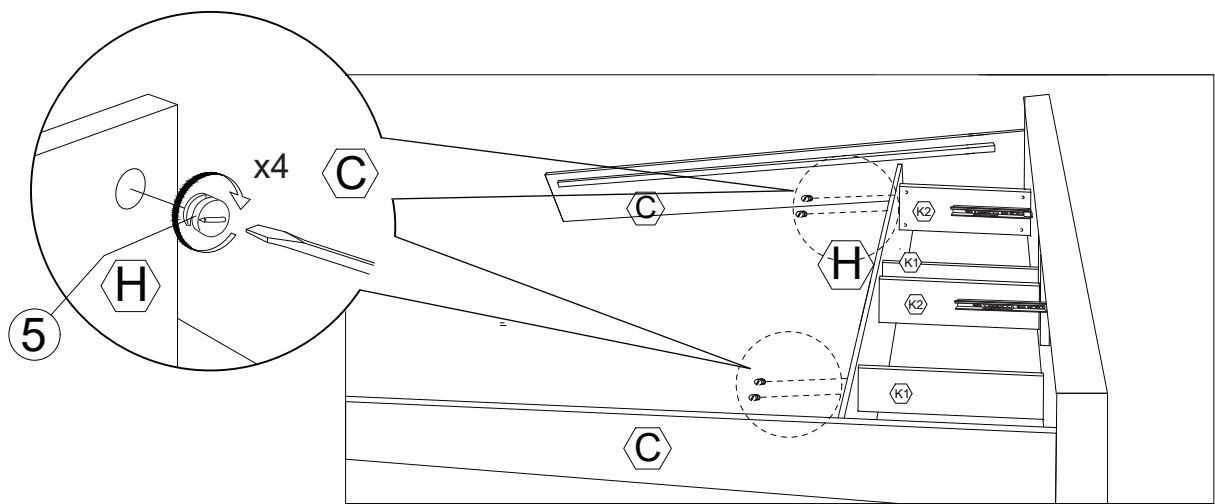
## STEP 5



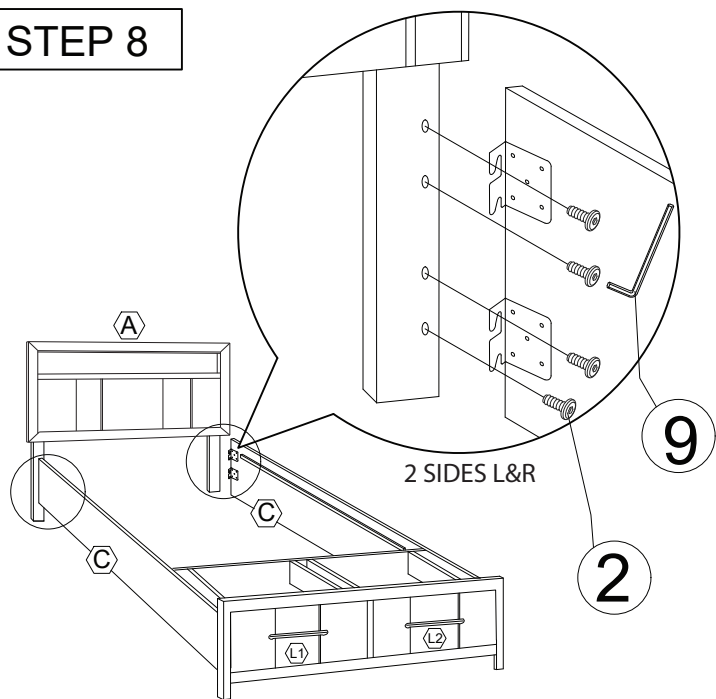
## STEP 6



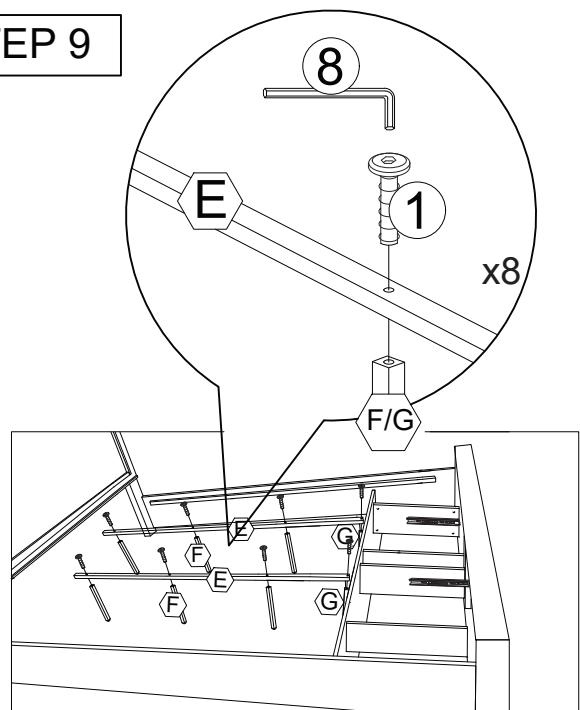
STEP 7



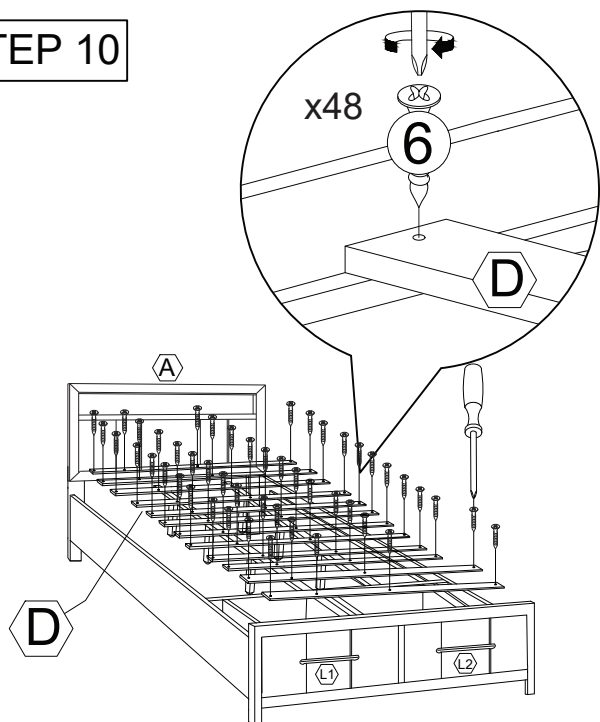
STEP 8



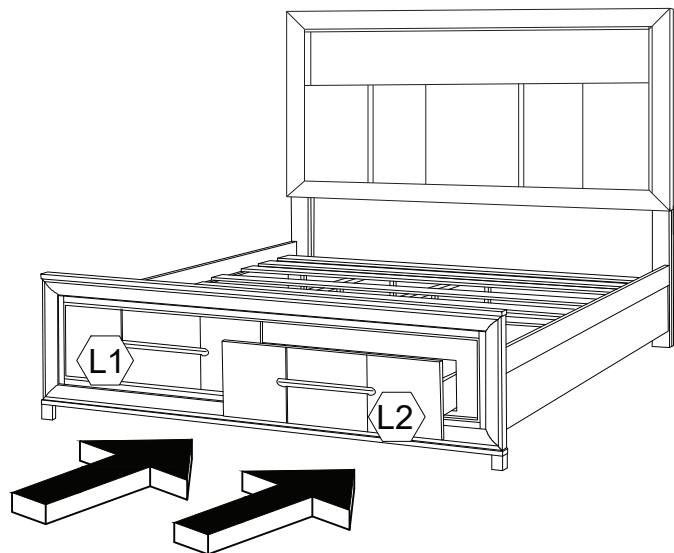
STEP 9



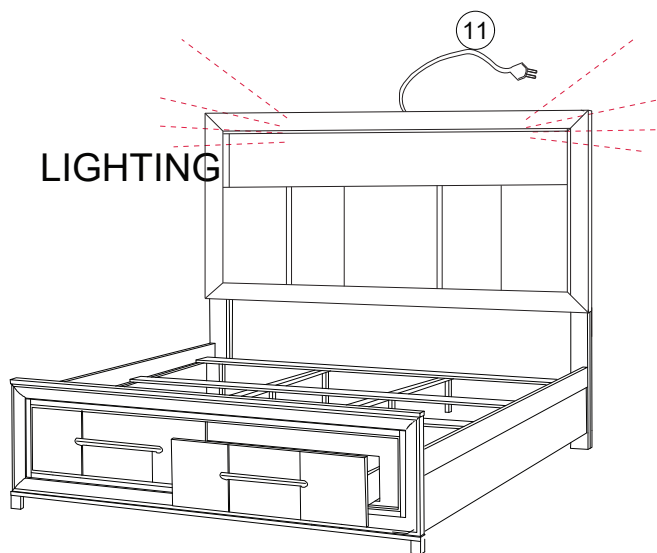
STEP 10



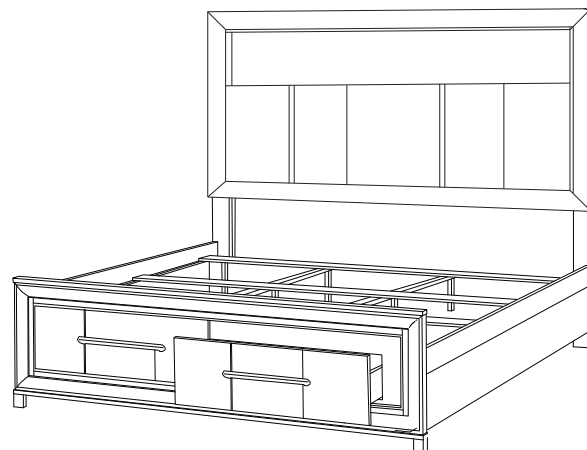
STEP 11



STEP 12



STEP 13



COMPLETED ASSEMBLY