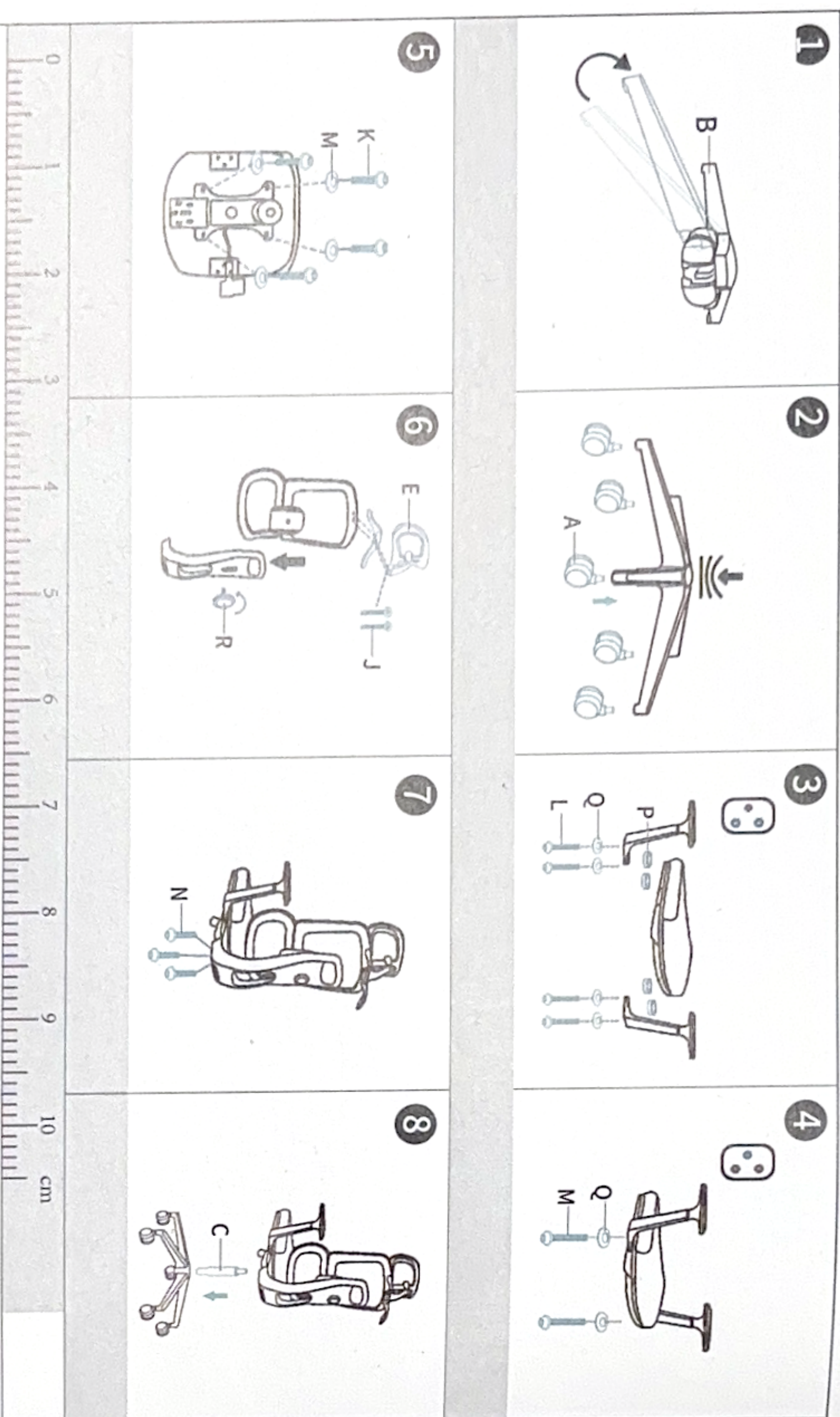


# Parts List (Actual size may vary; Each type of screw and washer has a spare).

<b>A</b>	<b>B</b>	<b>C</b>	<b>D</b>	<b>E</b>	<b>F</b>	<b>G</b>	<b>H</b>	<b>I</b>
5 Wheels	Chair Base	Gaslift	Armrest Pair	Headrest	Seat Cushion	base	Back	Connecting Bracket
<b>J</b>	<b>K</b>	<b>L</b>	<b>M</b>	<b>N</b>	<b>O</b>	<b>P</b>	<b>Q</b>	<b>R</b>
Headrest Screw (M6*40) 2+1	Chassis Screw (M6*40) 4+1	Armrest Inner Screw (M6*40) 4+1	Armrest Outer Screw (M6*35) 2+1	Backrest Screw (M8*40) 3+1	Allen Wrench	Washer(Thick) 4+1	Washer(Thin) 10+1	Knob

Note: Before installing the chair, please sort the screws and test the screw length for installation.

## Assembly Diagram (Actual size may vary).



### Installation and Commissioning

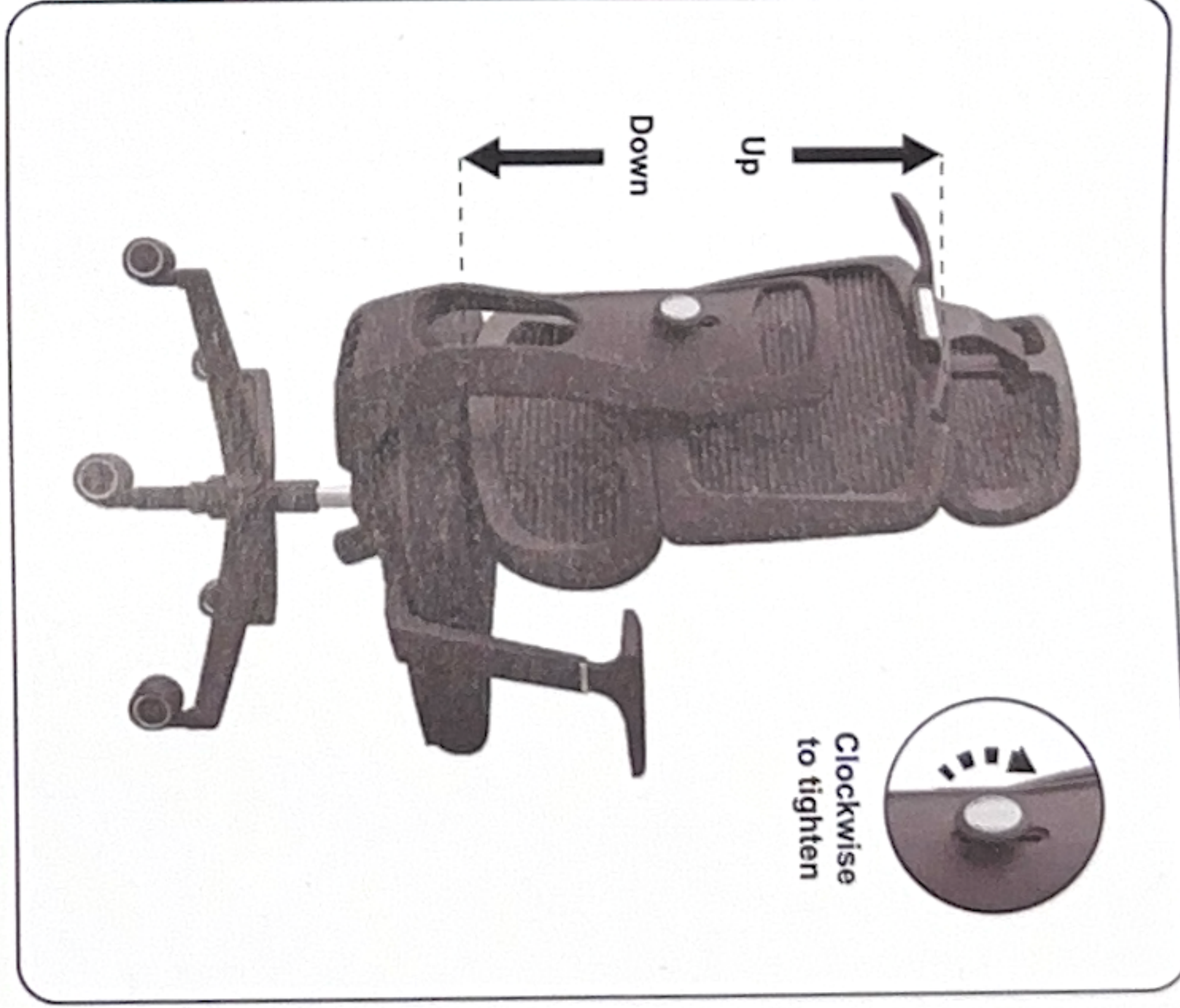
1. Prior to installation, it is imperative to thoroughly review all attachments, including the installation instructions shown in the figure, to gain proficiency in the required steps and methods.
2. Please verify the completeness and condition of all accessories to ensure there are no missing or damaged parts.
3. Choose a well-spaced and clean area for assembly to facilitate the process and prevent any damage to the components.
4. Utilize a soft microfiber cloth when cleaning the furniture to maintain its pristine condition.
5. To ensure a smooth installation, it is essential to properly align screws with the corresponding holes before tightening them.



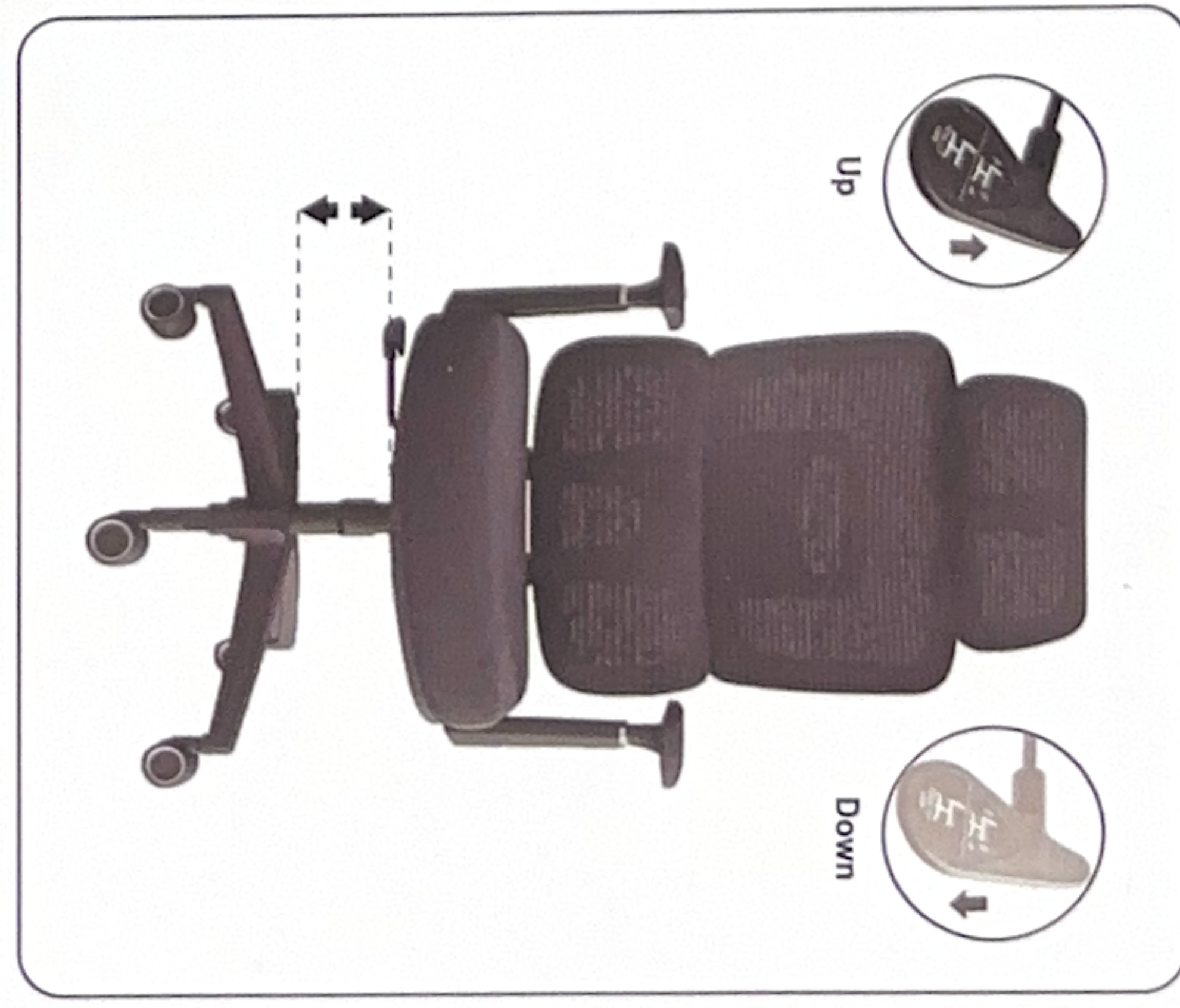
### Read the tips carefully Safe use of products

1. Only one person can sit in a chair.
2. Place on flat ground when using.
3. Do not let children under the age of 5 sit alone in the chair.
4. Do not sit on the Armrest. It will damage or break the Armrest and/or chair.
5. Do not stand on the chair, use it as a step and ladder, as this could lead to a severe risk of injury.

## Instructions for Use



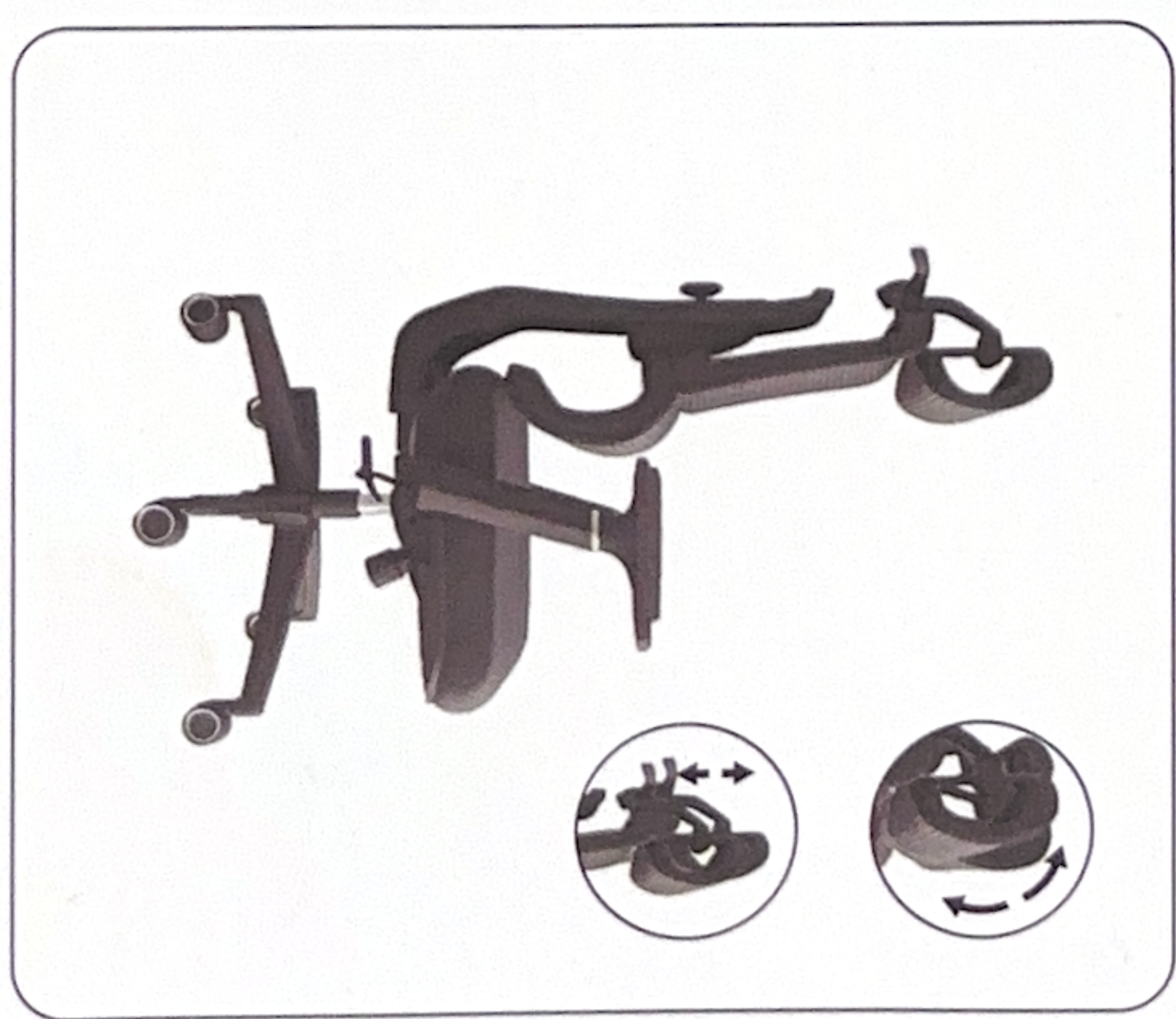
Adjustable Height of Backrest



Seat Height Adjustment



Tilt Function



Headrest Adjustment